



**ACE INDUSTRIES
(INDIA) PVT. LTD.**

CUSTOMISED SOLUTIONS FOR EVERY APPLICATION!



**4-pt Suspended
Trolley mounted
Centrifuge**



**Customised
Centrifuge for
Corrosive
Applications**

**4-pt Suspended
Lifting Bag Type
Centrifuge with
Dome Opening**



**Universal Pilot
Centrifuge with
Dome Opening**



**4-pt Suspended
Bottom Discharge
Centrifuge with
Dome Opening**



ACE - THE LEADER IN CHEMICAL AND PHARMACEUTICAL EQUIPMENTS

ACE INDUSTRIES is an engineering company which specialises in the design, manufacture and supply of BASKET TYPE CENTRIFUGE to industries like chemical and pharma for their many applications. We have an impressive track record working in this field for over three decades having supplied more than three thousand centrifuges (on turnkey basis all over the world) with exports to countries like the US, Italy, Thailand, Nigeria, South Africa, Philippines, Malaysia, Bahrain, Iraq, Iran among others.

Our manufacturing facilities lie in Maharashtra and Gujarat. Mr. M.H. Makhani, the Promoter of ACE INDUSTRIES, is a UDCT B.CHEM ENGG. graduate who perfectly understands the buyers' requirement and can therefore manufacture to suit their specific requirements. We have also successfully supplied and commissioned many chemical plants for conversion of sulphur to other useful chemicals.

Outside view of our latest manufacturing facility at Wada near Mumbai



Our plant at Vapi



Inside view of Ankleshwar plant



Machines awaiting despatch

Inside view of our plant at Wada showing centrifuges being readied for delivery



ACE PILOT-SCALE CENTRIFUGES

The brightness of centrifuging parameters can be easily determined with ACE Pilot Scale Centrifuge.

We are proud to present this innovative and customised solution for R&D and Pilot Plants.

TABLE TOP CENTRIFUGE

BASKET SIZE : 8" (200mm) dia. x 6" (150mm) depth

CAPACITY : 1.5 lit. Cake

MOTOR : 1 HP x 1440 rpm

G-FORCE : 230

FILTER AREA : 0.063 sq. mt.

Available with Halar, Teflon, PFA Coatings

SINGLE POINT CENTRIFUGE

CAPACITY : 6 lit. (10 kg)

BASKET SIZE : 12" (300mm) dia. x 8" (200mm) depth

MOUTH DIA. : 230 mm (10 in.)

MOTOR : 0.75 hp x 960 rpm

BASKET SPEED: 900 rpm

G-FORCE : 135

Suitable for ETP/STP: Range - 1m³ to 10m³



UNIVERSAL PILOT CENTRIFUGE

OUTSTANDING FEATURES:

1. Four-point machine.
2. cGMP model /CE marked Atex models available
3. Variable basket speed: Max 2000 rpm,
G-Force: 666 (max).
4. Capacity: 7 lit. / 10 kg.
5. Trolley-mounted. Can be used on any storey.
6. Filter Area: 0.235 sq. mt. upto 0.565 sq. mt.
8. Most suitable for biotechnology products.

MANUAL TOP DISCHARGE CENTRIFUGE

Manual Top Discharge Machines are available with full mouth body mouth open lid, full lip mouth open lid and 3/4 lip mouth open lid. The washing & feeding is designed to meet Product requirements. The Manual Top Discharge Machines are available from as small as 8" dia to as large as 72" dia.

We have made as large as 72" dia Basket Size of our STD Model 180-4 centrifuge machine giving cake load of 1000 lit/ 1200 kgs per batch.

Lid available in three options:

- 1) Full mouth open lid
- 2) D-type lid
- 3) Full body open lid



cGMP MTD Centrifuge Machine

Technical Specifications of models currently being manufactured:

SR NO.	MODEL NO. 'ACE'		30-5	45-5	60-5	75-5	90-5	100-5	120-5	150-4	180-4
1	Basket diameter	mm	300	450	600	750	900	1000	1200	1500	1800
2	Basket mouth diameter	mm	250	325	425	550	600	700	800	1000	1200
3	Height of basket shell	mm	250	250	325	325	480	480	480	600	700
4	Rated charge of basket	kg	7	18	45	75	187	211	330	660	1100
5	Max. cake Capacity of basket	ltr	6	20	44	66	170	192	300	600	989
6	Filter Area of Basket	Sq.m	0.24	0.35	0.60	0.76	1.35	1.50	1.8	2.82	3.29
7	Basket Speed	RPM	1400	1400	1220	1100	1000	950	900	700	635
8	Acceleration a basket periphery	'G' units	330	500	499	507	503	500	540	400	403
9	Power of Motor	HP KW	1 0.75	2 1.50	3 2.20	5 3.70	7.5 5.5	10 7.5	15 11.25	20 15.00	30 22.5
10	Machine area (approx)	mtr	0.6x0.8	0.9x1	1.2x1.5	1.5x1.7	1.7x1.9	1.9x2.2	2.2x2.5	2.5x2.8	3x3.5
11	Machine weight (Approx.)	kg	225	650	950	1150	1800	2000	3000	4000	5000

Note : The maximum cake capacity of basket is based on the mechanical design calculations. Other restrictions such as density, viscosity and other characteristics of the material handled may result in lower outputs.

Note : Dimensions and specifications are subject to change without prior notice.

FOUR-POINT SUSPENDED CENTRIFUGE WITH TROLLEY MOUNTING

Our machines are available from 12" dia. to 36" dia. giving a cake load of 170/200 kgs per batch max. Manual dome opening available upto 24" dia.

Salient Features:

- No grouting required
- Machine can be easily taken from one place to another
- Recommended for clean housekeeping

Safety Features:

- Nitrogen blanketing System
- Zero speed Interlock
- Vibration Tripper
- FLP Lid and Dome Sensor



4-POINT 36" DIA. TROLLEY-MOUNTED CENTRIFUGE (CGMP)



MTD DOME OPENING
TYPE CENTRIFUGE

Gerb Dampner

LIFTING BAG TYPE CENTRIFUGE WITH DOME OPEN

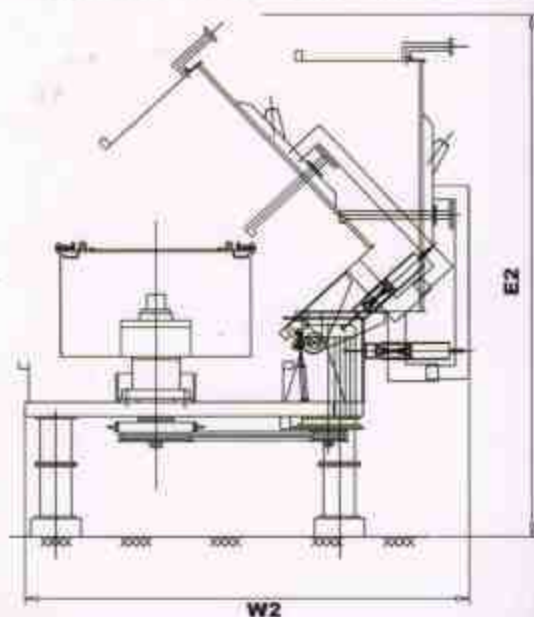
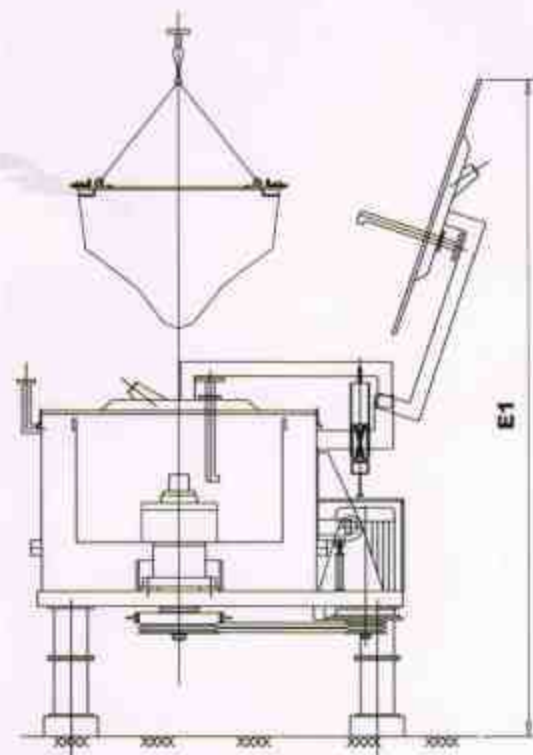
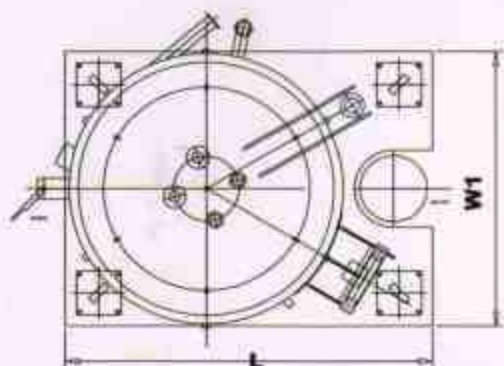


3-POINT INSTANT
CAKE-LIFTING
CENTRIFUGE
(MS/RL)

The latest trend in solid / liquid separation is to go in for greater ease in cake handling. Filter cloth is available in the desired strength and micron size. The fabric with poly- propylene, woven / non woven polyester, nylon, cotton etc. with strengthening strips and hook up arrangement are easily available.

The ACE lifting bag system supports such filter bags. Quick and easy fixing arrangement helps in the centrifuging. The time factor for the various operations is studied and this is passed on to the user at the time of installation and commissioning.

The filter bag setting is precisely done so that the entire assembly is as fool-proof as the simple top discharge centrifuge. Hence 100% solid liquid separation without loss of a single solid particle in filtrate is achieved by the instant cake lifting type centrifuge. The head room required for a particular lifting type machine is indicated in the table shown below



TECHNICAL DATA

MOTOR H.P.	BASKET SIZE	G FORCE	RPM	MOUTH I.D.(MM)	BASKET CAPACITY		FILTER AREA SQ.MTR	Platform Length L (MM)	Platform Width W1(MM)	W2 (MM)	HEAD ROOM	
					VOL.(LT)	WT(KG)					E1 (MM)	E2 (MM)
3	24" X 12"	500	1200	410	50	60	0.604	1100	900	1250	1700	1400
5	30" X 12"	600	1200	510	80	90	0.740	1450	1150	1600	1850	1650
7.5	36" X 18"	500	1000	610	170	200	1.329	1650	1250	1800	2550	1950
15	48" X 20"	435	800	810	310	370	1.954	2100	1650	2250	3000	2500
20	60" X 24"	410	700	1010	620	750	2.911	2400	2030	2550	3800	3000
30	71" X 30"	310	550	1210	1100	1350	4.343	2800	2230	2950	4600	3500

Note: Dimensions and specifications are subject to change without prior notice

ADVANTAGES OF LIFTING BAG TYPE

- The time required for cake removal is negligible.
- Production is increased two-fold.
- Manual contact with cake is avoided.
- Cake can be easily elevated to upper storeys without the use of lifts or trolleys.
- Cake spillage on the floor is nil.
- More volumetric charge per machine available.
- Easy cleaning of the basket in and out.
- Full opening of the lid helps maintenance.

ADVANTAGES OF 4-POINT MOUNTING

- The vibration transmission is nil
- The machine can be used on upper storey.
- Good and clean house-keeping possible.
- No cost of R.C.C. foundation
- Can be shifted easily.
- Trolley mounting machines possible.
- No rusting and greasing headaches
- Maintenance of suspension negligible.
- Saving in floor area of the machine.
- **cGMP in the true sense.**

ADVANTAGES OF FULL BODY TOP OPENING

The central flange of the machine is very thick and wide it is machined all over. The bottom flange is given a square groove to hold Teflon, PTFE, SILICON packing with required projection.

The top flange sits truly on the packing making the joint 100% leak proof. Sufficient LBD LOCK allows quick and easy opening and closing.

The body top is hinged to the base plate. The hydraulic cylinder opens and closes the top part of the body easily. The body top once opened, gives easy access to the entire basket in and out.

The entire body from the inside and even the access to the central drive assembly is also made available. The basket if required can be removed when body top opens fully. Maintenance of the shaft and bearing housing can be easily done in top body opening machines.



INSIDE VIEW OF LIFTING BASKET



TEFFAL COATED LIFTING BAG TYPE CENTRIFUGE WITH LIFTER



DOME OPEN LIFTING BAG TYPE MACHINE WITH LIFTER FOR EASY REMOVAL OF MATERIAL

MULTI POINT FULL BODY BOTTOM CAKE DISCHARGE

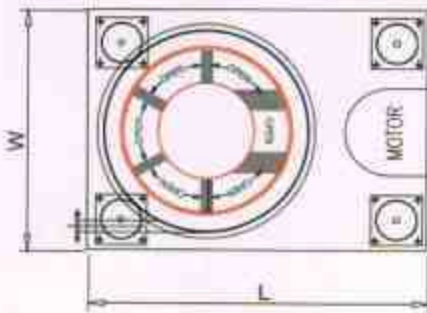


4-POINT SUSPENDED BOTTOM DISCHARGE CENTRIFUGE WITH DOME OPENING

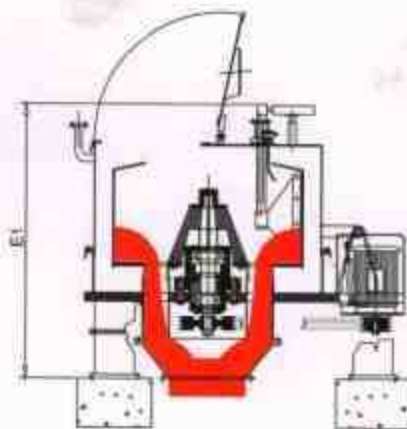
The Pharma and Fine Chemicals Manufacturing sectors have to face the challenge of impurities below PPM (parts per million) levels. A clean centrifuge is a must.

ACE offers full dome opening machines in its entire range of basket sizes.

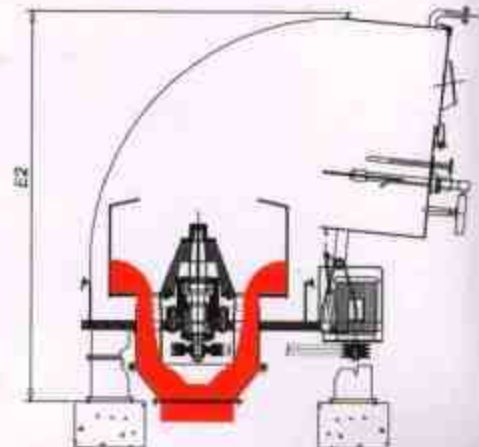
The simplicity of the Bottom Discharge arrangement is also taken care of. The multi-point full body bottom cake discharges without sweepers, the hydraulic scrapper, the cake sensor, the zero speed interlock, the safety switches, the anti vibration tripper, the DIN pressure test for air-tight operation, nitrogen purging with oxygen analyser, the GMP version, are all a part of the ACE BOTTOM DISCHARGE CENTRIFUGE. The dimensions of the machine and the headroom for basket sizes of 24" dia. to 72" dia. are given below:



TOP VIEW



LID OPEN



DOMES OPEN POSITION

TECHNICAL SPECIFICATIONS

MOTOR H.P.	BASKET SIZE	G FORCE	RPM	MOUTH I.D.(MM)	BASKET CAPACITY		FILTER AREA SQ.MTR	FLOOR AREA		HEAD ROOM (MM)
					VOL (LT)	WT(KG)		W (MM)	L(MM)	
3	24" X 12"	505	1220	450	45	55	0.523	1000	1650	1650
5	30" X 13"	510	1100	550	70	85	0.776	1250	2000	2000
7.5	36" X 18"	511	1000	650	140	170	1.329	1750	2500	2500
15	48" X 20"	430	800	850	300	360	1.899	2350	2850	2850
30	60" X 24"	310	600	1000	600	720	2.940	2750	3250	3250
50	72" X 30"	310	255	1200	1000	1200	4.320	3250	3750	3750

Note: Dimensions and specifications are subject to change without prior notice

THE PROCESS:

a) Feeding:

The slurry has to be charged through the feed pipe. The cake should develop uniformly inside the basket. The basket speed is almost half of the full speed. Care is taken with feed valve to control the flow rate of feed to ensure complete filtrate discharge. The collapsible filter cloth holding rings are provided to prevent cake carry over with liquid.

b) Cake Sensor:

The cake sensor gives the indication of cake filling up to the basket rim. The feed must be stopped if hooter sound of cake sensor is heard. The Feed Solenoid valve can be closed with PLC and cake sensor.

c) Washing & Spinning:

We provide special up and down moving efficient wash nozzles.

The cake should be washed free from impurities at a little higher speed than the feed speed. When wash discharge is free from impurities, the basket speed is raised to the maximum. The drying of cake is maximum due to maximum basket speed.

d) Dynamic Braking:

It is achieved by pressing of the STOP button of the control panel. The basket comes to a stand still within 200 seconds.

e) Scrapping:

The basket is run at a minimum possible speed. The hydraulic power pack is switched on. The scrapper is rotated around the scrapper shaft. The cake is cut and discharged through full body discharge opening provided below the body. Cake butterfly valve is bolted below the body to prevent liquid from entering cake holding tank due to malfunction. The scrapping takes about 30 minutes.

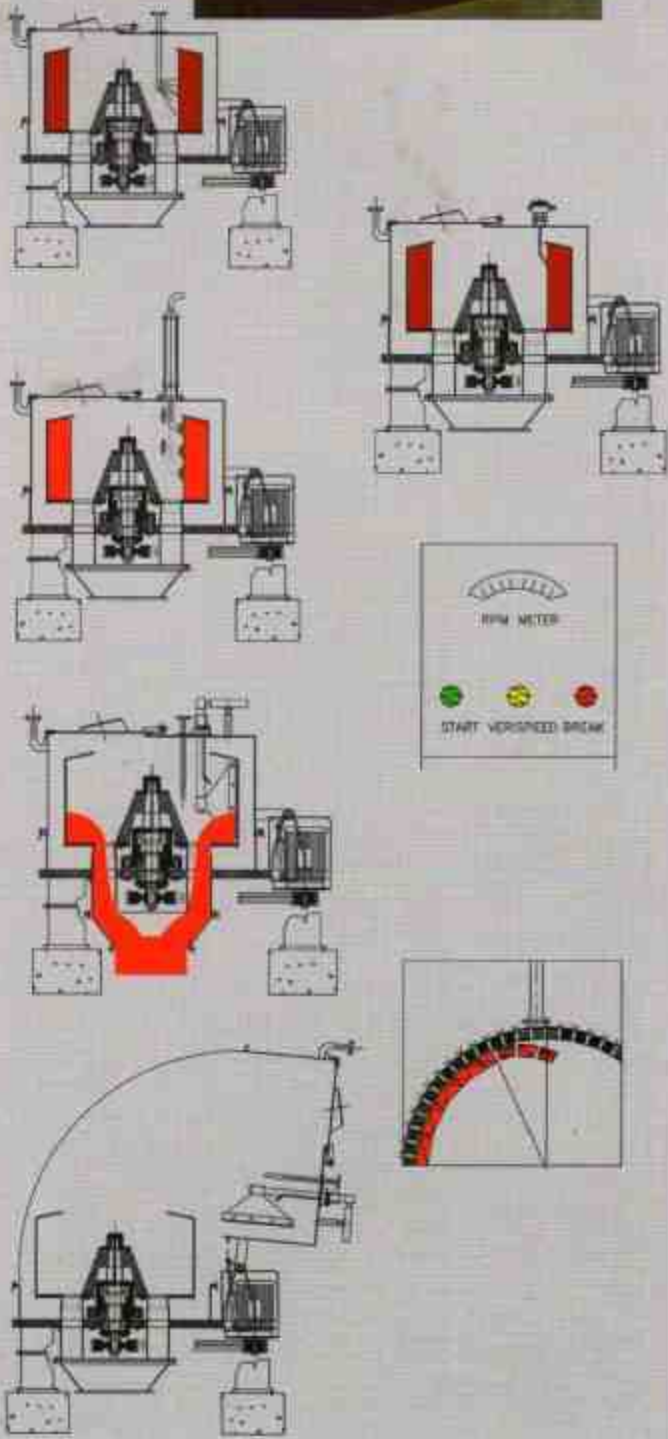
f) Heel Removal:

The gas pressure is applied on the jet nozzles provided outside the basket. The basket is run at a SLOW SPEED with scrapper in cut position. The jet pressure dislodges the last layer of cake.

g) Dome Opening:

The Scrapper is taken back to neutral position. The dynamic brake is applied to bring the basket to a stand still. The dome LBD locks are released. The dome is opened with HYDRAULIC Power pack lever. The cleaning of the body is easily done.

Scrapper assembly to suit various applications



AUTOMATION OF CENTRIFUGES



**FREE REPLACEMENT
GUARANTEE OF VFD
WITHIN 12 MONTHS
FROM DATE OF
COMMISSIONING**

The A.P.I. production and schedule 'M' drugs limitations requires time based production with necessary process steps. The dependance of production on human beings may spoil the quality of production.

ACE has thoroughly studied all the process steps of bottom discharge centrifuge. The total control of the machine is done electronically.

Use of V.F.D. coupled with P.L.C. has opened the gateway of automation. Our flip control system has been incorporated with HMI/MMI. The user can easily get the following time based benefits with our FLAME-PROOF control panel.

***CE and ATEX certified machines available on request.**

INPUTS (Time based)

FEEDING SPEED
WASHING SPEED
SPINNING SPEED
BRAKING TIME
SCRAPPING SPEED
CAKE SENSOR
LIMIT SWITCHES LID & DOME
VIBRATION TRIPPER

OUTPUTS (Operation based)

FEED VALVE
WASH VALVE
M.L. TANK VALVE
SCRAPPER OPERATION
CAKE OUTLET VALVE
NITROGEN BLANKETING VALVE
ZERO SPEED INTERLOCK
OVERLOAD TRIP

Batch-wise recordings of individual steps with respect to DATE / TIME / BATCH NO. is stored in the system. The print out is available as and when required.

THE TOTAL CYCLIC OPERATION CAN BE DIFFERENT FOR DIFFERENT PRODUCTS. THE CONTROL OF THE EQUIPMENT CAN BE MANAGED FROM A PARTICULAR DESKTOP COMPUTER.

ADVANTAGES OF USING V.F.D.

The use of V.F.D. (VARIABLE FREQUENCY DRIVE) in centrifuges is a great advancement. The V.F.D. of a standard make is used preferably one that has an in-built BRAKING CHOPPER and RESISTOR. The centrifuge runs with high starting and braking torque. Although ACE clutch pulleys and hand brakes are sturdy enough to do the job, the V.F.D. does it electronically. The wear and tear of brake liners and clutch liners is negligible. It is worthwhile to invest in a V.F.D. The variable speed is welcome to save power. The V.F.D. gives smooth centrifuging operation. Also, the work of feeding and washing can be done at lower basket speeds and the centrifuge drying can be done at higher speeds, if the basket charge is properly balanced.

ACE HAS SUPPLIED SEVERAL SUCH SYSTEMS WITH GREAT SUCCESS.

HOW GOOD IS ACE? ASK ANY OF THEM....

1. AARCH PHARMA LTD., Hyderabad/Gurgaon/Mumbai
2. AARTI INDUSTRIES LTD., GIDC,Vapi
3. ATRA PHARMACEUTICALS, **Iran**
4. ACME SYNTHETIC CHEMICALS, Mumbai
5. ASIATIC DRUGS & PHARMA PVT LTD., Delhi / Rajasthan
6. A SOLUTION PHARMACEUTICALS PVT LTD., Mumbai
7. APEX MEDICLAIM PVT LTD., Aurangabad / Mumbai
8. ADITYA BIRLA SCIENCE LTD., Talaja
9. ALGAE TECH PVT LTD., **Malaysia**
10. AJANTA PHARMA LTD., Aurangabad/Kandivali
11. AKRUTI TREXIM PVT LTD., Raipur
12. ALTA LABORATRIES LTD., Khopoli/Mumbai
13. AMBERNATH ORGANICS LTD., AMBERNATH
14. AMRUTANJAN HEALTH CARE LTD., Kancheepuram, TN
15. ANABOND TANTALUM PVT LTD., Adyar, Tamil Nadu
16. ANAMAYEE PHARMACHEM PVT LTD., Tarapur
17. ANTHEA AROMATICS PVT LTD., Talaja, Tarapur
18. ASHU ORGANICS PVT LTD., Ambernath/Badlapur/Talaja
19. ASTEC LIFE SCIENCE LTD., Khopoli
20. ATLAS FINE CHEMICALS PVT LTD., Nasik
21. BALPHARMA LTD., Bangalore
22. BASIC PHARMA LTD., Ankleshwar
23. BLUE CIRCLE ORGANICS PVT LTD., Ambernath/Badlapur
24. BORAX LTD., Ambernath
25. CADILA HEALTHCARE LTD., Ankleshwar / Baroda
26. CLARION DRUGS LTD., Nagpur
27. CIPLA LTD., Raigad
28. CTX LIFESCIENCES PVT. LTD., Surat / Gujarat
29. CALIBER CHEMICALS LTD., Sarigam
30. CSTRI, Bangalore
31. COLOR CHEM LTD., Roha
32. CROMO LABORATORIES PVT LTD., Medka, Hyderabad
33. DABUR INDIA LTD., Alwar
34. DAK ENERGETICS PVT LTD., **Indonesia**
35. DARUHERA PHARMACEUTICALS LTD., Rewari, Delhi
36. DAURALA ORGANICS LTD., Daurala /Delhi
37. DEEPAK NITRATES LTD., Pune /Roha
38. DELTA FINOCHEM PVT LTD., Nasik
39. DARGU PAKHSH PHARMA CHEM CO., **Iran**
40. D.K.PHARMACHEM PVT LTD., Badlapur-Thane
41. DORFKETAL CHEMICALS(I) PVT LTD., Navi Mumbai /Silvassa
42. DIFUSION TECHNOLOGIES, **Georgetown**
43. DR. REDDY'S LABORATORIES LTD., Hyderabad, Vizag
44. DOLPHINE CHEMICALS, Ankleshwar
45. DYMECH PHARMA PVT LTD., GIDC, Vapi
46. EL NASAR CO. FOR PHARMACEUTICALS CHEMICALS, **Colm**
47. ELPEE CHEMICALS PVT LTD., Roha
48. ENDOC PHARMA, Rajkot, Gujarat
49. ESCORTS MAHALE LTD., Bangalore
50. ESSEL MINING & INDUSTRIES LTD., GIDC, Vapi
51. EXCEL INDUSTRIES LTD., Lota Parshuram/Roha
52. FLAGMO EA TECHNOLOGIES, Doshi
53. G AMPHRAY LABORATORIES LTD., Ambernath
54. GE INDIA TECHNOLOGY LTD., Bangalore
55. GEM AROMATICS PVT LTD., Silvassa
56. GLUCONATE HEALTH LTD., Kolkata
57. GRINDLAYS PHARMACEUTICALS PVT LTD., Panvel
58. GULF ENVIROTECH, **A-Fajence**
59. HARSHA ENGINEERS LTD., Ahmedabad
60. HIKAL LTD., Bangalore
61. I.H.B.T., Palampur (H.P)
62. INDOFILL CHEMICALS CO., Thane
63. INDIAN OIL LTD., Faridabad
64. INGA PHARMACEUTICALS, Mumbai/Chennai
65. INTAS PHARMACEUTICALS LTD., Sanand, Gujarat
66. IOL CHEMICALS & PHARMACEUTICALS LTD., Bamala
67. ION EXCHANGE LTD., Navi Mumbai
68. IPCA LABORATORIES LTD., Mahad
69. ISAGRO ASIA LTD., Panoli
70. ITAL TECHNO INDIA PVT LTD., **Modena, Italy**
71. JAY BIOTECH PVT LTD., Vapi
72. J.K.ANSELL LTD., Aurangabad
73. JUPITOR LAYS PVT LTD., Kerala
74. JOHNSON MATHEY CHEMICALS (I) PVT. LTD., Raigad
75. JYOTHY LABORATORIES LTD., Pondicherry
76. LABORATORIES DAFFOOL PVT LTD., Mangalore
77. LOBA CHEMI PVT LTD., Tarapur
78. MILLENNIUM CHEMIPHARMA MYSORE PVT LTD., Mysore
79. MAHINDRA & MAHINDRA LTD., Igatpuri
80. MACLEODS PHARMACEUTICALS LTD., GIDC, Sarigam
81. MANGALAM DRUGS LTD., GIDC, Vapi
82. MERCK PHARMA LTD., Talaja / Goa / Ambernath
83. MEDLEY PHARMACEUTICALS LTD., Tarapur
84. MEGAFINE PHARMA LTD., Vapi, Nasik
85. NABA AL KHABOR, **Baghdad, Iraq**
86. NEON LABORATORIES LTD., Paighar, Boisar
87. NITREX CHEMICALS (I) LTD., Jhagedia, Bharuch, Gujarat
88. NICHOLAS PIRAMAL INDIA LTD., Chennai
89. NITIKA CHEMICALS LTD., Nagpur
90. NUTRAPLUS PRODUCTS (I) PVT LTD., Tarapur
91. OMNIACTIVE HEALTH TECH LTD., Pune/Kerala
92. PROVIMI ANIMALS NUTRITION (I) PVT. LTD., B'lore
93. PERFECT CIRCLE INDIA LTD., Nasik
94. PENAM LABORATORIES LTD., Rewari / Delhi
95. PLANT LIPIZ LTD., Errakulam
96. PRAJ INDUSTRIES LTD., Pune
97. PROTEC LABS, **South Africa**
98. Q V LABS LTD., Ankleshwar
99. RALLIS INDIA LTD., Aurgangabad, Ankleshwar
100. R.L.FINE CHEM, Bangalore/Hindupur
101. RUPA ORGANICS PVT LTD., Navi Mumbai
102. ROHA DYE CHEM PVT LTD., Roha
103. SANOFI (I) LTD., Ankleshwar
104. SEQUENT SCIENTIFIC LTD., Mysore /Mahad/Bharuch
105. SUD CHEMIE LTD., Nandesari / Errakulam
106. SOMU ORGANICS LTD., Bangalore
107. SRINIVAS CHEMICALS LTD., Hyderabad
108. SRIKISHNA PHARMA PVT LTD., Hyderabad
109. SILICON INT'NL PRODUCTS LTD., Khopoli
110. SABERO ORGANICS (GUJARAT) LTD., Sarigam
111. SODIUM METALS PVT LTD., Nandesari
112. SOFTSULE PVT. LTD., Mumbai
113. SWAL CORPORATION LTD., Howrah
114. SUDARSHAN CHEMICALS, Pune
115. SUPRIYA LIFESCIENCE LTD., Goregaon, Mumbai
116. STERLITE INDUSTRIES LTD., Silvassa
117. SUPREME PHARMACEUTICALS PVT LTD., Mysore
118. S.S.TECHNO PVT LTD., Pune
119. TAMILNADU PETRO PRODUCTS LTD., Chennai
120. TECHNOCRAFT INDUSTRIES (I) LTD., Murbad
121. TES AMM RECYLIERS INDIA PVT LTD., Chennai
122. THAI POLYPHOSPHATE CHEMICALS LTD., **Thailand**
123. THE GODAVARI SUGAR MILLS LTD., Bhagalpur
124. THE DHARAMSI MORARJI CHEMICALS CO. LTD., Roha
125. TATVA CHINTAN PHARMA CHEM PVT. LTD., Ankleshwar
126. TOYO ENGINEERING LTD., Tarapur
127. UNITED PHOSPHORUS LTD., Ankleshwar
128. UNIMARK REMEDIES LTD., Vapi/Ahemdabad
129. UNION CHEMICALS PVT LTD., Tarapur
130. UNICHEM LABORATORIES LTD., Jogeshwari / Roha
131. VARICON AQUA SOLUTIONS LTD., **London, U.K**
132. VADIVARNE SPECIALITY CHEMICALS LTD., Igatpuri/Nasik
133. VIJAY PERFUMES PVT LTD., Vasai /Tarapur
134. ZENITH LTD., Tarapur
135. ZYOUS CADILA HEALTH CARE LTD., Ankleshwar
136. ZANDU PHARMACEUTICALS LTD., Ankleshwar

Ace Industries has successfully executed turnkey projects for several of the above listed clients...

They all trust ACE CENTRIFUGES Shouldn't you too?



Manufactured and Marketed by:



**ACE INDUSTRIES
(INDIA) PVT. LTD.**

ASSOC. COs: MAK INDUSTRIES, AIM INDUSTRIES AND ACE CHLORIDES

E-mail : ace_centrifuges@yahoo.co.in

Website: www.acecentrifuges.com
www.acecentrifuges.co.in

Adm. Office : 113, Alpine Indl. Estate, Marol Military Rd., Andheri (E), Mumbai - 400 059, India
Tel.: 022 - 42258000 (30Lines) / 29201763 / 66919449 Fax: 022-29204939

- Plant 1 : **AIM INDUSTRIES & MAK INDUSTRIES**
10-12 & 14, Alpine Indl. Estate, Marol Military Rd., Andheri (E), Mumbai - 400 059, India
Mobile: 98211 42442, 93222 17611
- Plant 2 : **ACE INDUSTRIES**
J-71B/2, GIDC, 40 Shade Area, Vapi, District Bhusar, Gujarat.
Mob.: 9377001430
- Plant 3 : **ACE CHLORIDES**
7505, G.I.D.C., Karmatur, Chokdi, Ankleeshwar, Dist. Bharuch, Gujarat.
Telefax: 02646 - 226728 Mobile: 093280 42487
- Plant 4 : **ACE INDUSTRIES (INDIA) PVT. LTD.**
Plot No.504, Village Kondhale, Taluka Wada, Dist.: Paighar, Maharashtra - 421 312.